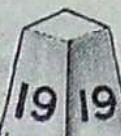


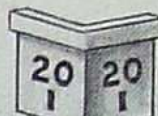
1



2



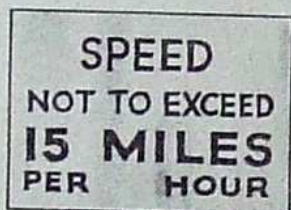
3



4



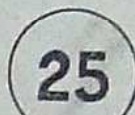
5



6



7



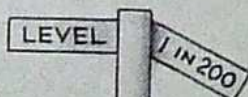
8



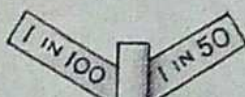
9



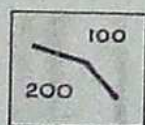
10



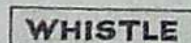
11



12



13



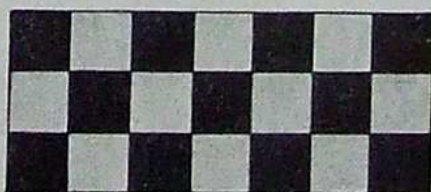
14



15



16



17



18

LINESIDE INDICATIONS

1. Mile post (33 miles). Midland Division, London Midland Region.
2. Mile post (33 $\frac{1}{4}$ miles). Midland Division, London Midland Region.
- 3 & 4. Concrete mile posts. (19 miles and 20 $\frac{1}{4}$ miles).
5. Metal plate mile post (10 $\frac{3}{4}$ miles). (There are also a number of other varieties of mile posts.)
- 6, 7 & 8. Maximum speed limit signs (miles per hour). Number 7 on Eastern and North Eastern Regions only.
9. Temporary speed restriction commences.
10. Temporary speed restriction terminates.
- 11, 12 & 13. Types of gradient posts.
14. Whistle order board.
15. Distant warning of temporary speed restriction.
16. Water trough warning board. Eastern Region only.
17. Postal apparatus warning board. Black and yellow checker board.
18. Levelling post. Used where subsidence trouble is experienced.