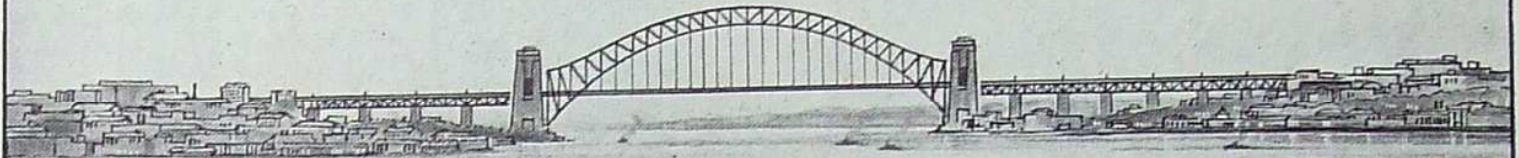


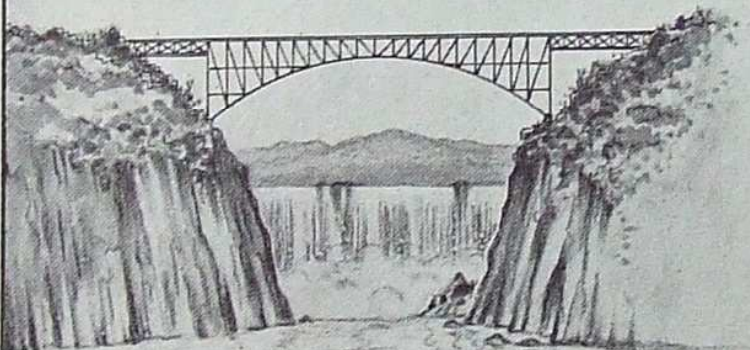
# TYPES OF BRIDGES



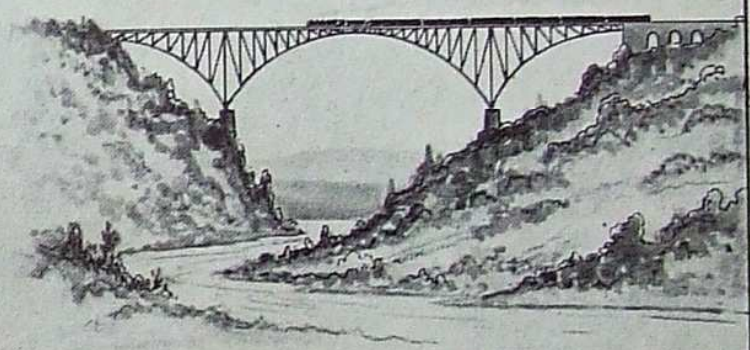
THE FORTH BRIDGE (CANTILEVER)



THE SYDNEY HARBOUR BRIDGE (STEEL ARCH)



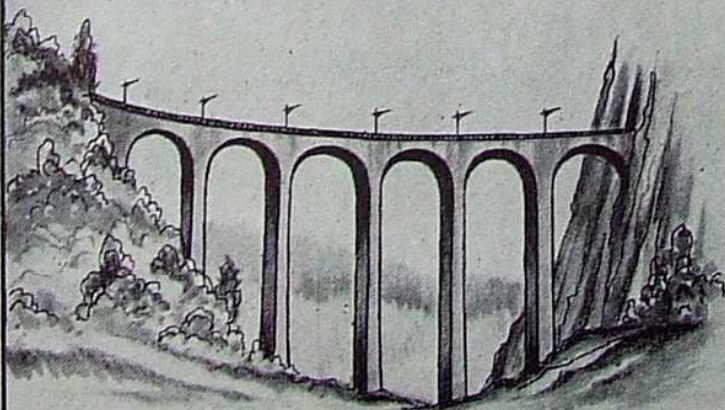
THE ZAMBESI BRIDGE. VICTORIA FALLS (STEEL ARCH)



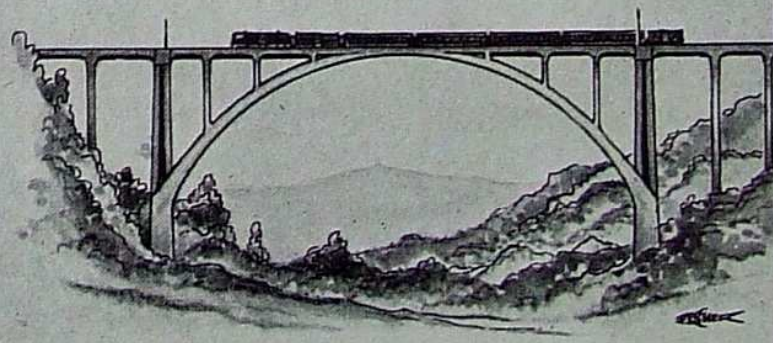
VIAUR VIADUCT. FRANCE (HINGED CANTILEVER)



THE BROOKLYN BRIDGE. NEW YORK (SUSPENSION)



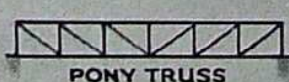
THE LANDWASSER VIADUCT. SWITZERLAND (MASONRY ARCHES)



THE LANGWIES BRIDGE. SWITZERLAND (REINFORCED CONCRETE)



PRATT TRUSS



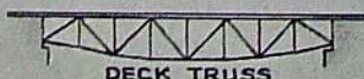
PONY TRUSS



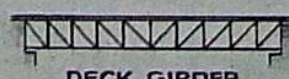
BOWSTRING GIRDER



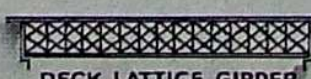
THROUGH TRUSS



DECK TRUSS



DECK GIRDER



DECK LATTICE GIRDER

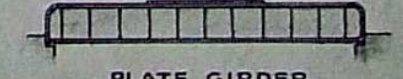


PLATE GIRDER

## GIRDER STRUCTURES